

# ENAIR SYSTEM



## Enter Corporation

3600 Brittmoore Rd. Suite #150

Houston, TX 77043

Tel: 713-932-6496 Fax: 713-574-5913

<https://www.enairsales.com>

[enairsales@gmail.com](mailto:enairsales@gmail.com)

# CONTENTS

---

<b>4</b>	COMPRESSOR DUTY MOTORS
<b>5</b>	MAGNETIC STARTERS
<b>6</b>	PRESSURE SWITCHES
<b>9</b>	AIR FILTERS
<b>10</b>	AIR HOSES
<b>11</b>	HVLP SPRAY GUNS
<b>11</b>	SPRAY GUN REGULATORS
<b>12</b>	FB PNEUMATIC TOOLS
<b>14</b>	PRESSURE REGULATORS
<b>15</b>	PARTICULATE FILTERS
<b>16</b>	LUBRICATORS
<b>16</b>	COALESCING FILTERS
<b>17</b>	FILTERS REGULATORS
<b>18</b>	COALESCING FILTERS/DESICCANT DRYERS

---



- 
- 19** COMBINATION FRC
  - 20** PIGGY BACK FILTERS
  - 20** FILTER REGULATORS/COALESCING FILTERS/DESICCANT DRYERS
  - 22** ACTIVATED CHARCOAL FILTERS
  - 22** AUTOMATIC DRAIN
  - 23** ACCESSORIES
  - 24** VALVE & MINI REGULATORS
  - 26** PRESSURE GAUGES
  - 27** QUICK COUPLERS

# COMPRESSOR DUTY MOTORS



w / Thermal Protector



EM-02



EM-03



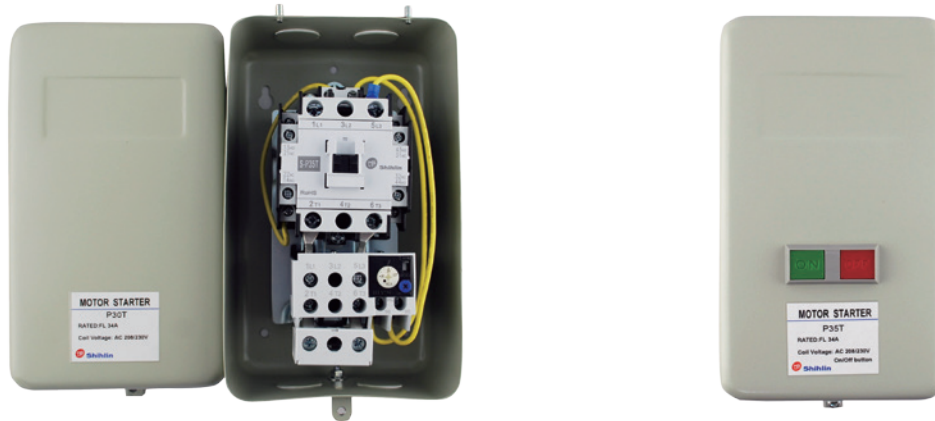
EM-04



EM-05

MODEL	HP	RPM	PH	F.L.A.	Volts VAC	Shaft in	FR.	Weight
EM-02	2	3450	1	15/7.5	120/240	5/8	56	30
EM-03	3	3450	1	15	230	5/8	56	36
EM-04	3.7	3450	1	17.2	230	5/8	56	43
EM-05	5	3450	1	22	230	7/8	56	51

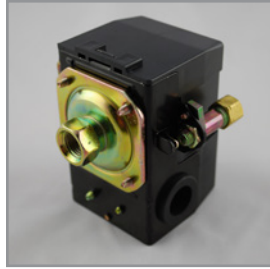
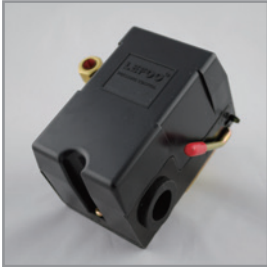
# MAGNETIC STARTERS



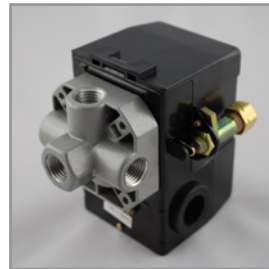
MODEL	HP	PHASE	AMPS	ENCLOSURE	VOLTS VAC
5-1-230	5	1	34	9"H 5"W 5.25"D	208-230
5-1-230X				11"H 6"W 5.75"D	
5-1-230PB				9"H 5"W 5.25"D ( On/Off Button)	
5-3-230	5	3	18	9"H 5"W 5.25"D	460-480
5-3-460			11		
7.5-1-230X	7.5	1	48	11"H 6"W 5.75"D	208-230
7.5-1-230PB				11"H 6"W 5.75"D ( On/Off Button)	
7.5-3-230		3	24	9"H 5"W 5.25"D	460-480
7.5-3-460			18		
10-1-230X	10	1	54	13.5"H 7.5"W 6.5"D	208-230
10-3-230		3	38	11"H 6"W 5.75"D	
10-3-460			18	9"H 5"W 5.25"D	460-480
15-3-230	15	3	65	11"H 6"W 5.75"D	208-230
15-3-460			24	9"H 5"W 5.25"D	460-480
20-3-230X	20	3	54	13.5"H 7.5"W 6.5"D	208-230
20-3-460			34	11"H 6"W 5.75"D	460-480
25-3-230X	25	3	80	13.5"H 7.5"W 6.5"D	208-230
25-3-460			48	11"H 6"W 5.75"D	460-480
30-3-230X	30	3	100	13.5"H 7.5"W 6.5"D	208-230
30-3-460X			65		460-480



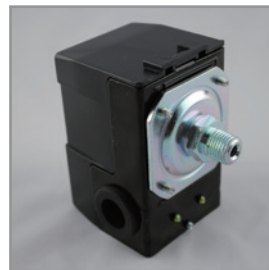
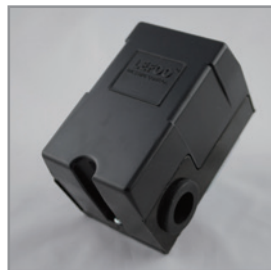
# LEFOO PRESSURE SWITCHES



MODEL	PSI RANGE	AMPS	MANIFOLD
LF10-S4	25-50	20	1/4" NPT (4 Port)
LF10-L1	95-125	20	1/4" NPT (1 Port)
LF10-L4	95-125	20	1/4" NPT (4 Port)
LF10-H1	140-175	20	1/4" NPT (1 Port)
LF10-H4	140-175	20	1/4" NPT (4 Port)
LF10-M4	110-150	20	1/4" NPT (4 Port)
LF10A-L1	95-125	26	1/4" NPT (1 Port)
LF10A-L4	95-125	26	1/4" NPT (4 Port)
LF10A-H1	140-175	26	1/4" NPT (1 Port)
LF10A-H4	140-175	26	1/4" NPT (4 Port)



MODEL	PSI RANGE	AMPS	MANIFOLD	DESCRIPTION
LF10A-H4N	140-175	26	1/4" NPT (4 Port)	no on/off lever



MODEL	PSI RANGE	AMPS	MANIFOLD	DESCRIPTION
LF10A-M1N	110-150	26	1/4" Male NPT	no unloader no on/off lever



MODEL	PSI RANGE	AMPS	MANIFOLD	DESCRIPTION
LF10-L4H	95-125	20	1/4" NPT (4 Port)	90 ° unloader



MODEL	PSI RANGE	Electrical Rating 440VAC 3-phase	MANIFOLD
LF18-H4	140-175	16A	1/4" NPT (4 Port)



MODEL	PSI RANGE	AMPS	MANIFOLD
LF19A-L1	95-125	26	1/4" NPT (1 Port)
LF19A-L4	95-125	26	1/4" NPT (4 Port)
LF19A-H1	140-175	26	1/4" NPT (1 Port)
LF19A-H4	140-175	26	1/4" NPT (4 Port)

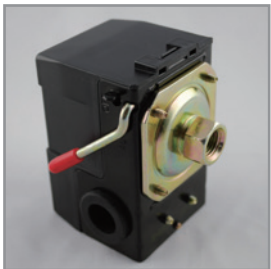
# HEAVY DUTY LEFOO PRESSURE SWITCHES



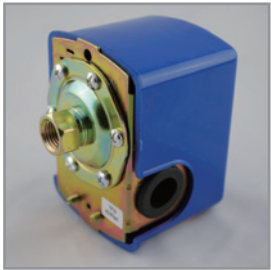
Steel Housing

MODEL	PSI RANGE	AMPS	MANIFOLD
LF17-L1	95-125	24	1/4" NPT (1 Port)
LF17-H1	145-175	24	1/4" NPT (1 Port)

# LEFOO WATER PRESSURE SWITCHES



MODEL	PSI RANGE	AMPS	MANIFOLD
LF10-W	30-50	20	1/4" NPT (1 Port)
LF10-W4	30-50	20	1/4" NPT (4 Port)



MODEL	PSI RANGE	MANIFOLD	2 Pole HP Rating		
			120VAC 1-phase	240VAC 1-phase	240VAC 3-phase
LF16-1	40-60	1/4" NPT (1 Port)	1.5HP	2HP	3HP



# SUNNY PRESSURE SWITCHES



MODEL	PSI RANGE	AMPS	MANIFOLD
SU-L1S	95-125	20	1/4" NPT (1 Port), small cable inlet.
SU-L4S	95-125	20	1/4" NPT (4 Port), small cable inlet.
SU-L1	95-125	25	1/4" NPT (1 Port)
SU-L4	95-125	25	1/4" NPT (4 Port)
SU-L4M	105-135	25	1/4" NPT (4 Port), small cable inlet.
SU-H1N	140-175	25	1/4" NPT (1 Port) (no unloader)
SU-H1	140-175	25	1/4" NPT (1 Port)
SU-H4	140-175	25	1/4" NPT (4 Port)



No unloader

Small cable inlet

# AIR FILTERS

## Air Filter Silencer Assembly



AF-04 & AF-06 Same body size

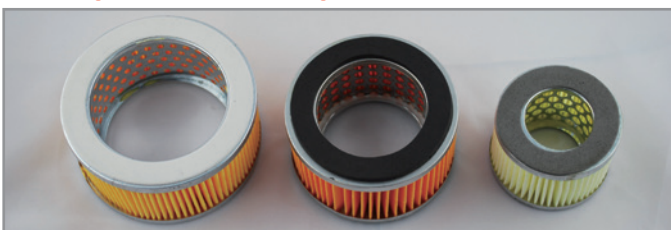


AF-08

MODEL	INLET	HOUSING
AF-04	1/2"	Steel
AF-06	3/4"	Steel
AF-08	1"	Steel



## Replacement Paper Elements



FE-03

FE-02

FE-01

MODEL	I.D. in	O.D. in	HEIGHT in
FE-01	1.46	2.65	2
FE-02	2.34	3.75	2.2
FE-03	2.94	4.25	2.1

## AIR HOSES

### Polyurethane Braid Air Hose



AU-2071



AU-2081

MODEL	DESCRIPTION
AU-2071	1/4" X 25' 200PSI w/ swivel fitting
AU-2072	1/4" X 50' 200PSI w/ swivel fitting
AU-2074	1/4" X 100' 200PSI w/ swivel fitting
AU-2081	3/8" X 25' 300PSI w/ swivel fitting
AU-2082	3/8" X 50' 300PSI w/ swivel fitting
AU-2084	3/8" X 100' 300PSI w/ swivel fitting

### Recoil Polyurethane Air Hose



AU-2062

Color for recoil polyurethane air hose  
BL : Blue, YL : Yellow

MODEL	DESCRIPTION
AU-2061	1/4" X 15' 150PSI w/ fix & swivel fitting
AU-2062	1/4" X 25' 150PSI w/ fix & swivel fitting
AU-2063	1/4" X 30' 150PSI w/ fix & swivel fitting
AU-2064	1/4" X 50' 150PSI w/ fix & swivel fitting
AU-2066	3/8" X 15' 150PSI w/ fix & swivel fitting
AU-2067	3/8" X 25' 150PSI w/ fix & swivel fitting
AU-2068	3/8" X 30' 150PSI w/ fix & swivel fitting
AU-2069	3/8" X 50' 150PSI w/ fix & swivel fitting

## HYDRAULIC HOSES



EHC-001



Fixed Fitting



Swivel

MODEL	DESCRIPTION
EHC-001	1/2" X 6' higher hydraulic hose with 1/2" fixed fitting & 1/2" swivel
EHC-001F	1/2" X 6' higher hydraulic hose with 1/2" fixed fitting both side
EHC-001S	1/2" X 6' higher hydraulic hose with 1/2" swivel both side
EHC-002	1/2" X 6' higher hydraulic hose with 1/2" fixed fitting & 3/8" swivel
EHC-002F	1/2" X 6' higher hydraulic hose with 1/2" fixed fitting & 3/8" fixed fitting
EHC-003	1/2" X 6' higher hydraulic hose with 1/2" fixed fitting & 1/4" swivel

## HVLP SPRAY GUNS



TH102AG

TH101AG

TH201AG

MODEL	Type Of Feed	Nozzle mm	Spray Pattern in	Fluid Output mL/min	Air Consumption cfm	Air Pressure PSI	Cup Volume mL
TH101AG-1.3	Gravity	1.3	7.9 – 9.4	67	14	29	600
TH101AG-1.4	Gravity	1.4	7.9 – 9.4	100			
TH101AG-1.5	Gravity	1.5	7.9 – 9.4	133			
TH101AG-1.7	Gravity	1.7	7.9 – 9.4	200			
TH101AG-1.8	Gravity	1.8	7.9 – 9.4	233			
TH101AG-2.0	Gravity	2.0	7.9 – 9.4	300			
TH102AG-1.0	Gravity	1.0	5.5 – 7.1	20 - 60	7	22	100
TH102AG-1.2	Gravity	1.2					
TH201AG-1.3	Gravity	1.3	11.8 – 12.8	170 - 200	16.4	26	600
TH201AG-1.4	Gravity	1.4		160 - 190			

## SPRAY GUN REGULATORS



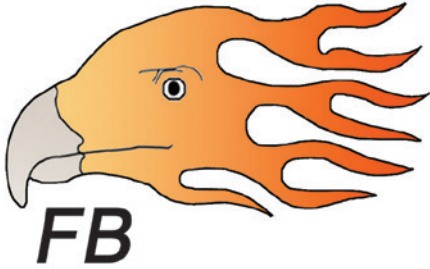
JYF02



MAR300

MODEL	NPT	DESCRIPTION	MAX INPUT	MAX OUTPUT
JYF02	1/4"	One Male One Female NPT Regulator w/ Gauge	145 PSI	140 PSI
MAR300	1/4"	Female NPT Regulator (NO GAUGE)	145 PSI	140 PSI





## FB-101

### 1/4" AIR DIE GRINDER

Tool Features:

- \* Collet Size: 1/4 inch
- \* 22,000 r.p.m.
- \* 7 inch long
- \* Rear Exhaust
- \* 12.4 cfm
- \* 1.32 lbs



## FB-102

### AIR CUT-OFF TOOL

Tool Features:

- \* Disc Size: 3 inch
- \* 20,000 r.p.m.
- \* Rear Exhaust
- \* 12.4 cfm
- \* 1.76 lbs



## FB-111

### 1/4" AIR DIE GRINDER

Tool Features:

- \* Collet Size: 1/4 inch
- \* 0.3 HP Motor
- \* 25,000 r.p.m.
- \* 6 inch long
- \* Rear Exhaust
- \* 10 cfm
- \* 0.84 lbs



## FB-307

### 3/8" AIR REVERSIBLE DRILL

Drill Features:

- \* Chuck Size: 3/8 inch
- \* 3,000 r.p.m.
- \* Handle Exhaust
- \* 9.9 cfm
- \* 2.2 lbs



## FB-501L

### 1/2" AIR RATCHET

Wrench Features:

- \* 200 r.p.m.
- \* 13 inch long
- \* 74 ft-lb torque
- \* Rear Exhaust
- \* 8.8 cfm
- \* 4.03 lbs



## FB-505N

### 1/2" AIR RATCHET

Wrench Features:

- \* 160 r.p.m.
- \* 11.4 inch long
- \* 74 ft-lb torque
- \* Rear Exhaust
- \* 7.1 cfm
- \* 2.82 lbs



## FB-510

### 3/8" AIR RATCHET

Wrench Features:

- \* 160 r.p.m.
- \* 9.2 inch long
- \* 51 ft-lb torque
- \* Rear Exhaust
- \* 7.1 cfm
- \* 2.64 lbs



## FB-602

### 1/4" AIR RATCHET

Wrench Features:

- \* 230 r.p.m.
- \* 6.6 inch long
- \* 37 ft-lb torque
- \* Rear Exhaust
- \* 4.6 cfm
- \* 1.1 lbs



## FB-611

### 1/4" AIR DIE GRINDER

Tool Features:

- \* Collet Size: 1/4 inch
- \* 90 Degree Angle Head
- \* Rear Exhaust
- \* 19,000 r.p.m.
- \* 10 cfm
- \* 1.12 lbs



## FB-1306T

### 3/8" SQ. DR. AIR IMPACT WRENCH

Wrench Features:

- \* Twin Hammer Design
- \* 230 ft-lb torque
- \* 1 inch anvil
- \* 2.55 lbs
- \* 8.1 cfm
- \* 11,500 r.p.m.
- \* Handle Exhaust



## FB-1407

### 1/2" SQ. DR. AIR IMPACT WRENCH

Wrench Features:

- \* Twin Hammer Design
- \* 550 ft-lb torque
- \* 1 inch anvil
- \* 4.33 lbs
- \* 10.6 cfm
- \* 7,500 r.p.m.
- \* Handle Exhaust



## FB-1451

### 1/2" SQ. DR. AIR IMPACT WRENCH

Wrench Features:

- \* Twin Hammer Design
- \* 635 ft-lb torque
- \* 1 inch extended anvil
- \* 4.4 lbs
- \* 11.66 cfm
- \* 8,000 r.p.m.
- \* Handle Exhaust



## FB-1451-2

### 1/2" SQ. DR. AIR IMPACT WRENCH

Wrench Features:

- \* Twin Hammer Design
- \* 635 ft-lb torque
- \* 2 inch extended anvil
- \* 4.62 lbs
- \* 11.66 cfm
- \* 8,000 r.p.m.
- \* Handle Exhaust



## FB-1452

### 1/2" SQ. DR. AIR IMPACT WRENCH

Wrench Features:

- \* Twin Hammer Design
- \* 550 ft-lb torque
- \* 1 inch anvil
- \* 3.63 lbs
- \* 8.5 cfm
- \* 9,800 r.p.m.
- \* Handle Exhaust



## FB-1452-2

### 1/2" SQ. DR. AIR IMPACT WRENCH

Wrench Features:

- \* Twin Hammer Design
- \* 550 ft-lb torque
- \* 2 inch anvil
- \* 3.78 lbs
- \* 8.5 cfm
- \* 9,800 r.p.m.
- \* Handle Exhaust



## FB-1481

### 1/2" SQ. DR. AIR IMPACT WRENCH

Wrench Features:

- \* Twin Hammer Design
- \* 420 ft-lb torque
- \* 1 inch extended anvil
- \* 5.79 lbs
- \* 8.8 cfm
- \* 7,500 r.p.m.
- \* Front Exhaust



## FB-1485Q

### 1/2" SQ. DR. AIR IMPACT WRENCH

Wrench Features:

- \* Twin Hammer Design
- \* 580 ft-lb torque
- \* 1 inch extended anvil
- \* 6.31 lbs
- \* 9.9 cfm
- \* 7,800 r.p.m.
- \* Front Exhaust



## FB-2650

### 3/4" SQ. DR. AIR IMPACT WRENCH

Wrench Features:

- \* Twin Hammer Design
- \* 1,000 ft-lb torque
- \* 1.35 inch anvil
- \* 10.54 lbs
- \* 12.4 cfm
- \* 5,500 r.p.m.
- \* Front Exhaust



## FB-2650-6

### 3/4" SQ. DR. AIR IMPACT WRENCH

Wrench Features:

- \* Twin Hammer Design
- \* 1,000 ft-lb torque
- \* 6 inch anvil
- \* 11.51 lbs
- \* 12.4 cfm
- \* 5,500 r.p.m.
- \* Front Exhaust



## FB-2655

### 3/4" SQ. DR. AIR IMPACT WRENCH

Wrench Features:

- \* Twin Hammer Design
- \* 1,150 ft-lb torque
- \* 1.5 inch anvil
- \* 7.63 lbs
- \* 13.42 cfm
- \* 5,400 r.p.m.
- \* Handle Exhaust



## FB-2655-6

### 3/4" SQ. DR. AIR IMPACT WRENCH

Wrench Features:

- \* Twin Hammer Design
- \* 1,150 ft-lb torque
- \* 6 inch anvil
- \* 8.65 lbs
- \* 13.42 cfm
- \* 5,400 r.p.m.
- \* Handle Exhaust



## FB-3655

### 1" SQ. DR. AIR IMPACT WRENCH

Wrench Features:

- \* Twin Hammer Design
- \* 1,150 ft-lb torque
- \* 1.5 inch anvil
- \* 7.83 lbs
- \* 13.42 cfm
- \* 5,400 r.p.m.
- \* Handle Exhaust



## FB-3803TA

### 1" SQ. DR. AIR IMPACT WRENCH

Wrench Features:

- \* Twin Hammer Design
- \* 2,100 ft-lb torque
- \* 8 inch extended anvil
- \* 21.34 lbs
- \* 24.7 cfm
- \* 4,600 r.p.m.
- \* Bottom Exhaust



## FB-3861

### 1" SQ. DR. AIR IMPACT WRENCH

Wrench Features:

- \* Pin-Less Hammer
- \* 1,800 ft-lb torque
- \* 7 inch anvil
- \* 18.46 lbs
- \* 24.02 cfm
- \* 6,000 r.p.m.
- \* Side Exhaust



## FB-3880G

### 1" SQ. DR. AIR IMPACT WRENCH

Wrench Features:

- \* Pin-Less Hammer Design
- \* 1,450 ft-lb torque
- \* 1.5 inch anvil
- \* 15.18 lbs
- \* 19.4 cfm
- \* 4,500 r.p.m.
- \* Handle Exhaust



## FB-3885T

### 1" SQ. DR. AIR IMPACT WRENCH

Wrench Features:

- \* Twin Hammer Design
- \* 2,000 ft-lb torque
- \* 7 inch extended anvil
- \* 23.32 lbs
- \* 25.4 cfm
- \* 5,000 r.p.m.
- \* Side Exhaust



## FB-4300

### 1" SQ. DR. AIR IMPACT WRENCH

Wrench Features:

- \* Pin-Less Hammer Design
- \* 1,800 ft-lb torque
- \* 8 inch extended anvil
- \* 29.7 lbs
- \* 21.2 cfm
- \* 4,200 r.p.m.
- \* Side Exhaust



## FB-5301

### 1" SQ. DR. AIR IMPACT WRENCH

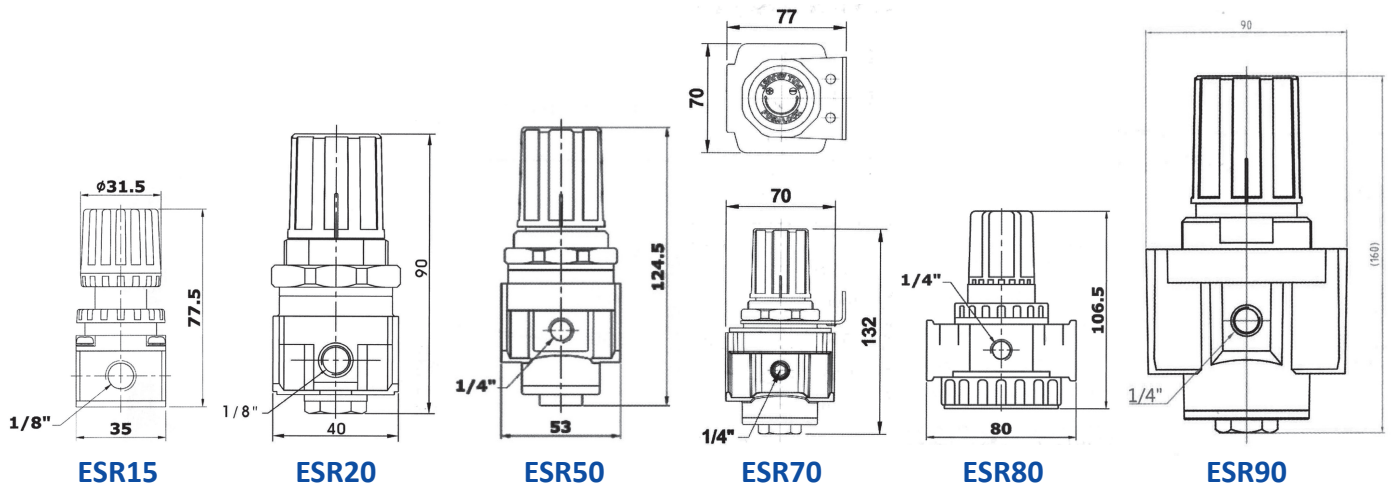
Wrench Features:

- \* Twin Hammer Design
- \* 2,400 ft-lb torque
- \* 8 inch extended anvil
- \* 31.9 lbs
- \* 26.5 cfm
- \* 4,300 r.p.m.
- \* Side Exhaust





# PRESSURE REGULATORS



MODEL	NPT	GAUGE PORT (NPT)	DESCRIPTION	MAX INPUT	MAX OUTPUT	CFM
ESR152N	1/4"	1/8"	Mini Regulator (NO GAUGE) 7 - 140 PSI Range	150 PSI	140 PSI	38
ESR152NG	1/4"	1/8"	Mini Regulator w/ Gauge 7 - 140 PSI Range	150 PSI	140 PSI	38
ESR192N	1/4"	1/8"	Mini Regulator w/Tank & Regulated Gauge Ports, 7 - 150 PSI Range	150 PSI	150 PSI	38
ESR202N	1/4"	1/8"	Mini Regulator (NO GAUGE) 7 - 140 PSI Range	150 PSI	140 PSI	70
ESR202NG	1/4"	1/8"	Mini Regulator w/ Gauge 7 - 140 PSI Range	150 PSI	140 PSI	70
ESR503NG	3/8"	1/4"	Regulator w/ Gauge 7 - 150 PSI Range	215 PSI	150 PSI	105
ESR504NG	1/2"	1/4"	Regulator w/ Gauge 7 - 150 PSI Range	215 PSI	150 PSI	109
ESR513NG	3/8"	1/4"	Regulator w/ Gauge 7 - 225 PSI Range	250 PSI	225 PSI	105
ESR704NG	1/2"	1/4"	Regulator w/ Gauge 7 - 225 PSI Range	250 PSI	225 PSI	141
ESR706NG	3/4"	1/4"	Regulator w/ Gauge 7 - 225 PSI Range	250 PSI	225 PSI	141
ESR802NG	1/4"	1/8"	Regulator w/ Gauge 7 - 150 PSI Range	215 PSI	150 PSI	61
ESR803NG	3/8"	1/8"	Regulator w/ Gauge 7 - 150 PSI Range	215 PSI	150 PSI	88
ESR804NG	1/2"	1/8"	Regulator w/ Gauge 7 - 150 PSI Range	215 PSI	150 PSI	105
ESR906NG	3/4"	1/4"	Regulator w/ Gauge 7 - 215 PSI Range	250 PSI	215 PSI	162
ESR908NG	1"	1/4"	Regulator w/ Gauge 7 - 215 PSI Range	250 PSI	215 PSI	183

# PARTICULATE FILTERS

ESF202N



ESF706N



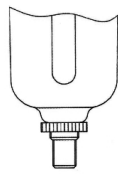
ESF804N



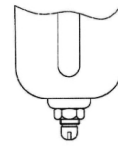
ESF906NA



Semi-Auto Drain Valve



Auto Drain Valve



Manual Drain Valve

MODEL	NPT	DESCRIPTION	MAX INPUT	MAX OUTPUT	CFM
ESF202N	1/4"	5μ filter element, Drain Capacity 15 ml.	150 PSI	145 PSI	38
ESF502N	1/4"	5μ filter element, Drain Capacity 55 ml.	215 PSI	145 PSI	77
ESF503N	3/8"	5μ filter element, Drain Capacity 55 ml.	215 PSI	145 PSI	105
ESF504N	1/2"	5μ filter element, Drain Capacity 55 ml.	215 PSI	145 PSI	109
ESF704N	1/2"	5μ filter element, Drain Capacity 80 ml. / Metal Bowl.	250 PSI	225 PSI	141
ESF704NA	1/2"	5μ filter element, Drain Capacity 80 ml / Metal Bowl / auto drain valve.	250 PSI	225 PSI	141
ESF706N	3/4"	5μ filter element, Drain Capacity 80 ml. / Metal Bowl.	250 PSI	225 PSI	141
ESF706NA	3/4"	5μ filter element, Drain Capacity 80 ml / Metal Bowl / auto drain valve.	250 PSI	225 PSI	141
ESF802N	1/4"	5μ filter element, Drain Capacity 80 ml.	215 PSI	145 PSI	61
ESF803N	3/8"	5μ filter element, Drain Capacity 80 ml.	215 PSI	145 PSI	88
ESF803NA	3/8"	5μ filter element, Drain Capacity 80 ml / auto drain valve.	215 PSI	145 PSI	88
ESF804N	1/2"	5μ filter element, Drain Capacity 80 ml.	215 PSI	145 PSI	105
ESF804NA	1/2"	5μ filter element, Drain Capacity 80 ml / auto drain valve.	215 PSI	145 PSI	105
ESF906N	3/4"	5μ filter element, Drain Capacity 300 ml. / Metal Bowl.	250 PSI	225 PSI	162
ESF906NA	3/4"	5μ filter element, Drain Capacity 300 ml / Metal Bowl / auto drain valve.	250 PSI	225 PSI	162
ESF908N	1"	5μ filter element, Drain Capacity 300 ml. / Metal Bowl.	250 PSI	225 PSI	183
ESF908NA	1"	5μ filter element, Drain Capacity 300 ml / Metal Bowl / auto drain valve.	250 PSI	225 PSI	183

## LUBRICATORS



ESL202N



ESL704N

MODEL	NPT	DESCRIPTION	MAX INPUT	MAX OUTPUT	CFM
ESL102N	1/4"	Air Lubricator : Oil Capacity 5.5 ml, Male Female NPT.	150 PSI	145 PSI	38
ESL202N	1/4"	Air Lubricator : 5 $\mu$ filter element, Oil Capacity 30 ml.	150 PSI	145 PSI	38
ESL502N	1/4"	Air Lubricator : 5 $\mu$ filter element, Oil Capacity 80 ml.	215 PSI	145 PSI	77
ESL503N	3/8"	Air Lubricator : 5 $\mu$ filter element, Oil Capacity 80 ml.	215 PSI	145 PSI	105
ESL704N	1/2"	Air Lubricator : 5 $\mu$ filter element, Oil Capacity 150 ml. / Metal Bowl.	250 PSI	225 PSI	141
ESL706N	3/4"	Air Lubricator : 5 $\mu$ filter element, Oil Capacity 150 ml. / Metal Bowl.	250 PSI	225 PSI	141
ESL802N	1/4"	Air Lubricator : 5 $\mu$ filter element, Oil Capacity 150 ml.	215 PSI	145 PSI	61
ESL803N	3/8"	Air Lubricator : 5 $\mu$ filter element, Oil Capacity 150 ml.	215 PSI	145 PSI	88
ESL804N	1/2"	Air Lubricator : 5 $\mu$ filter element, Oil Capacity 150 ml.	215 PSI	145 PSI	105
ESL906N	3/4"	Air Lubricator : 5 $\mu$ filter element, Oil Capacity 300 ml. / Metal Bowl.	250 PSI	225 PSI	162
ESL908N	1"	Air Lubricator : 5 $\mu$ filter element, Oil Capacity 300 ml. / Metal Bowl.	250 PSI	225 PSI	183

## COALESCING FILTERS



ESFM968N

MODEL	NPT	DESCRIPTION	MAX INPUT	MAX OUTPUT	CFM
ESFM764N	1/2"	0.01 $\mu$ filter element : Removes 99.99% particles and oil >0.01 $\mu$ . / Metal Bowl.	250 PSI	225 PSI	141
ESFM764NA	1/2"	0.01 $\mu$ filter element : Removes 99.99% particles and oil >0.01 $\mu$ . / Metal Bowl / auto drain valve.	250 PSI	225 PSI	141
ESFM766N	3/4"	0.01 $\mu$ filter element : Removes 99.99% particles and oil >0.01 $\mu$ . / Metal Bowl.	250 PSI	225 PSI	141
ESFM766NA	3/4"	0.01 $\mu$ filter element : Removes 99.99% particles and oil >0.01 $\mu$ . / Metal Bowl / auto drain valve.	250 PSI	225 PSI	141
ESFM863N	3/8"	0.01 $\mu$ filter element : Removes 99.99% particles and oil >0.01 $\mu$ , Drain Capacity 80 ml.	250 PSI	150 PSI	88
ESFM864N	1/2"	0.01 $\mu$ filter element : Removes 99.99% particles and oil >0.01 $\mu$ , Drain Capacity 80 ml.	250 PSI	150 PSI	88
ESFM966N	3/4"	0.01 $\mu$ filter element : Removes 99.99% particles and oil >0.01 $\mu$ . / Metal Bowl.	250 PSI	225 PSI	162
ESFM968N	1"	0.01 $\mu$ filter element : Removes 99.99% particles and oil >0.01 $\mu$ . / Metal Bowl.	250 PSI	225 PSI	183
ESFM968NA	1"	0.01 $\mu$ filter element : Removes 99.99% particles and oil >0.01 $\mu$ . / Metal Bowl / auto drain valve.	250 PSI	225 PSI	183

# FILTERS REGULATORS

ESFR202N



ESFR726NA



ESFR804N



MODEL	NPT	DESCRIPTION	MAX INPUT	MAX OUTPUT	CFM
ESFR202N	1/4"	5µ filter element, Drain Capacity 15 ml, Mini Regulator 7 - 140 PSI Range.	150 PSI	140 PSI	38
ESFR503N	3/8"	5µ filter element, Drain Capacity 55 ml, Regulator 7 - 150 PSI Range.	215 PSI	150 PSI	105
ESFR504N	1/2"	5µ filter element, Drain Capacity 55 ml, Regulator 7 - 150 PSI Range.	215 PSI	150 PSI	109
ESFR724N	1/2"	5µ filter element, Drain Capacity 80 ml, Regulator 7 - 225 PSI Range / Metal Bowl.	250 PSI	225 PSI	141
ESFR724NA	1/2"	5µ filter element, Drain Capacity 80 ml, Regulator 7 - 225 PSI Range / Metal Bowl / auto drain valve.	250 PSI	225 PSI	141
ESFR726N	3/4"	5µ filter element, Drain Capacity 80 ml, Regulator 7 - 225 PSI Range / Metal Bowl.	250 PSI	225 PSI	141
ESFR726NA	3/4"	5µ filter element, Drain Capacity 80 ml, Regulator 7 - 225 PSI Range / Metal Bowl / auto drain valve.	250 PSI	225 PSI	141
ESFR802N	1/4"	5µ filter element, Drain Capacity 80 ml, Regulator 7 - 150 PSI Range.	215 PSI	150 PSI	61
ESFR803N	3/8"	5µ filter element, Drain Capacity 80 ml, Regulator 7 - 150 PSI Range.	215 PSI	150 PSI	88
ESFR804N	1/2"	5µ filter element, Drain Capacity 80 ml, Regulator 7 - 150 PSI Range.	215 PSI	150 PSI	105
ESFR804NA	1/2"	5µ filter element, Drain Capacity 80 ml, Regulator 7 - 150 PSI Range, auto drain valve.	215 PSI	150 PSI	105
ESFR926N	3/4"	5µ filter element, Drain Capacity 300 ml, Regulator 7 - 215 PSI Range / Metal Bowl.	250 PSI	215 PSI	162
ESFR926NA	3/4"	5µ filter element, Drain Capacity 300 ml, Regulator 7 - 215 PSI Range / Metal Bowl / auto drain valve.	250 PSI	215 PSI	162
ESFR928N	1"	5µ filter element, Drain Capacity 300 ml, Regulator 7 - 215 PSI Range / Metal Bowl.	250 PSI	215 PSI	183
ESFR928NA	1"	5µ filter element, Drain Capacity 300 ml, Regulator 7 - 215 PSI Range / Metal Bowl / auto drain valve.	250 PSI	215 PSI	183

# COALESCING FILTERS / DESICCANT DRYERS



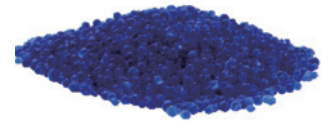
ESFLM863N



ESLM863N



ESLM966N



Desiccant

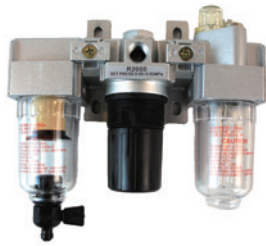
1. It is recommended to install a standard air filter/water separator in front of the air cleaner / dryer to remove larger debris (>5 $\mu$ ) and condensed water.
2. It is also recommended to have a shutoff valve upstream of the air cleaner / dryer for easy depressurization for service.

MODEL	NPT	DESCRIPTION	MAX INPUT	MAX OUTPUT	CFM
ESFLM863N	3/8"	1. 0.01 $\mu$ filter element, Drain Capacity 80 ml. 2. Desiccant dryer : Desiccant beads change color from blue to pink when they need to be changed or reactivated.	150 PSI	150 PSI	10
ESFLM864N	1/2"	1. 0.01 $\mu$ filter element, Drain Capacity 80 ml. 2. Desiccant dryer : Desiccant beads change color from blue to pink when they need to be changed or reactivated.	150 PSI	150 PSI	10
ESFLM966N	3/4"	1. 0.01 $\mu$ filter element, Remove 99.99% particles and oil >0.01 $\mu$ . / Metal Bowl. 2. Desiccant dryer : Desiccant beads change color from blue to pink when they need to be changed or reactivated / Metal Bowl.	225 PSI	225 PSI	18

MODEL	NPT	DESCRIPTION	MAX INPUT	MAX OUTPUT	CFM
ESLM863N	3/8"	When desiccant beads change color from blue to pink they need to be replaced or reactivated.	150 PSI	150 PSI	10
ESLM864N	1/2"	When desiccant beads change color from blue to pink they need to be replaced or reactivated.	150 PSI	150 PSI	10
ESLM966N	3/4"	When desiccant beads change color from blue to pink they need to be replaced or reactivated / Metal Bowl.	225 PSI	225 PSI	18
ESLM968N	1"	When desiccant beads change color from blue to pink they need to be replaced or reactivated / Metal Bowl.	225 PSI	225 PSI	18



# COMBINATION FRC



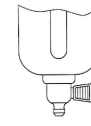
**ESC202N**



**ESC704NA**



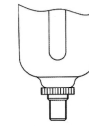
**ESC906NA**



Semi-Auto Drain Valve



Manual Drain Valve



Auto Drain Valve

MODEL	NPT	DESCRIPTION	MAX INPUT	MAX OUTPUT	CFM
ESC202N	1/4"	5μ filter element, Drain Capacity 15 ml, Oil Capacity 30 ml, 7 - 140 PSI Range.	150 PSI	140 PSI	38
ESC704N	1/2"	5μ filter element, Drain Capacity 80 ml, Oil Capacity 150 ml, 7 - 225 PSI Range / Metal Bowl.	250 PSI	225 PSI	141
ESC704NA	1/2"	5μ filter element, Drain Capacity 80 ml, Oil Capacity 150 ml, 7 - 225 PSI Range / Metal Bowl / auto drain valve.	250 PSI	225 PSI	141
ESC706N	3/4"	5μ filter element, Drain Capacity 80 ml, Oil Capacity 150 ml, 7 - 225 PSI Range / Metal Bowl.	250 PSI	225 PSI	141
ESC706NA	3/4"	5μ filter element, Drain Capacity 80 ml, Oil Capacity 150 ml, 7 - 225 PSI Range / Metal Bowl / auto drain valve.	250 PSI	225 PSI	141
ESC802N	1/4"	5μ filter element, Drain Capacity 80 ml, Oil Capacity 150 ml, 7 - 145 PSI Range / Metal Bowl.	215 PSI	145 PSI	61
ESC802NA	1/4"	5μ filter element, Drain Capacity 80 ml, Oil Capacity 150 ml, 7 - 145 PSI Range / Metal Bowl / auto drain valve.	215 PSI	145 PSI	61
ESC803N	3/8"	5μ filter element, Drain Capacity 80 ml, Oil Capacity 150 ml, 7 - 145 PSI Range / Metal Bowl.	215 PSI	145 PSI	88
ESC803NA	3/8"	5μ filter element, Drain Capacity 80 ml, Oil Capacity 150 ml, 7 - 145 PSI Range / Metal Bowl / auto drain valve.	215 PSI	145 PSI	88
ESC804N	1/2"	5μ filter element, Drain Capacity 80 ml, Oil Capacity 150 ml, 7 - 145 PSI Range / Metal Bowl.	215 PSI	145 PSI	105
ESC804NA	1/2"	5μ filter element, Drain Capacity 80 ml, Oil Capacity 150 ml, 7 - 145 PSI Range / Metal Bowl / auto drain valve.	215 PSI	145 PSI	105
ESC906N	3/4"	5μ filter element, Drain Capacity 300 ml, Oil Capacity 300 ml, 7 – 225 PSI Range / Metal Bowl.	250 PSI	225 PSI	162
ESC906NA	3/4"	5μ filter element, Drain Capacity 300 ml, Oil Capacity 300 ml, 7 – 225 PSI Range / Metal Bowl / auto drain valve.	250 PSI	225 PSI	162
ESC908N	1"	5μ filter element, Drain Capacity 300 ml, Oil Capacity 300 ml, 7 – 225 PSI Range / Metal Bowl.	250 PSI	225 PSI	183
ESC908NA	1"	5μ filter element, Drain Capacity 300 ml, Oil Capacity 300 ml, 7 – 225 PSI Range / Metal Bowl / auto drain valve.	250 PSI	225 PSI	183

## PIGGY BACK FILTERS



ESFRL724N



ESFRL724N

MODEL	NPT	DESCRIPTION	MAX INPUT	MAX OUTPUT	CFM
ESFRL202N	1/4"	Mini two-point type, 5 $\mu$ filter element, Drain Capacity 15 ml, Oil Capacity 30 ml.	150 PSI	145 PSI	38
ESFRL724N	1/2"	Two-point type, 5 $\mu$ filter element, Drain Capacity 80 ml, Oil Capacity 150 ml / Metal Bowl.	250 PSI	215 PSI	141
ESFRL724NA	1/2"	Two-point type, 5 $\mu$ filter element, Drain Capacity 80 ml, Oil Capacity 150 ml / Metal Bowl / auto drain valve.	250 PSI	215 PSI	141
ESFRL726N	3/4"	Two-point type, 5 $\mu$ filter element, Drain Capacity 80 ml, Oil Capacity 150 ml / Metal Bowl.	250 PSI	215 PSI	141
ESFRL726NA	3/4"	Two-point type, 5 $\mu$ filter element, Drain Capacity 80 ml, Oil Capacity 150 ml / Metal Bowl / auto drain valve.	250 PSI	215 PSI	141

## FILTER REGULATORS / COALESCING FILTERS / DESICCANT DRYERS



ESFR-FLM863N



ESFR-FLM864N

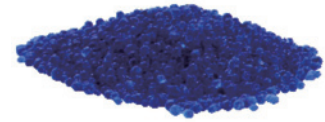
MODEL	NPT	DESCRIPTION	MAX INPUT	MAX OUTPUT	CFM
ESFR-FLM863N	3/8"	1. 5 $\mu$ filter element, Drain Capacity 80 ml, Regulator 7 - 150 PSI Range. 2. 0.01 $\mu$ filter element : Remove 99.99% particles and oil >0.01 $\mu$ . 3. Desiccant dryer desiccant beads change color from blue to pink when they need to be changed or reactivated.	250 PSI	150 PSI	10
ESFR-FLM864N	1/2"	1. 5 $\mu$ filter element, Drain Capacity 80 ml, Regulator 7 - 150 PSI Range. 2. 0.01 $\mu$ filter element : Remove 99.99% particles and oil >0.01 $\mu$ . 3. Desiccant dryer desiccant beads change color from blue to pink when they need to be changed or reactivated.	250 PSI	150 PSI	10
ESFR-FLM966N	3/4"	1. 5 $\mu$ filter element, Drain Capacity 300 ml, Regulator 7 - 215 PSI Range / Metal Bowl. 2. 0.01 $\mu$ filter element : Remove 99.99% particles and oil >0.01 $\mu$ / Metal Bowl. 3. Desiccant dryer desiccant beads change color from blue to pink when they need to be changed or reactivated / Metal Bowl.	250 PSI	174 PSI	16
ESFR-FLM966NA	3/4"	1. 5 $\mu$ filter element, Drain Capacity 300 ml, Regulator 7 - 215 PSI Range / Metal Bowl / auto drain valve. 2. 0.01 $\mu$ filter element : Remove 99.99% particles and oil >0.01 $\mu$ / Metal Bowl / auto drain valve. 3. Desiccant dryer desiccant beads change color from blue to pink when they need to be changed or reactivated / Metal Bowl.	250 PSI	174 PSI	18



**ESFFLM966N**



**ESFFLMR966N**



**Desiccant**

MODEL	DESCRIPTION
DC-01	Desiccant bottle 800g

MODEL	NPT	DESCRIPTION	MAX INPUT	MAX OUTPUT	CFM
ESFFLM966N	3/4"	1. 5 $\mu$ filter element : Remove oil, condensed water and particles >5 $\mu$ / Metal Bowl. 2. 0.01 $\mu$ filter element : Remove 99.99% particles and oil >0.01 $\mu$ / Metal Bowl. 3. Desiccant dryer desiccant beads change color from blue to pink when they need to be changed or reactivated / Metal Bowl.	250 PSI	225 PSI	16
ESFFLM968N	1"	1. 5 $\mu$ filter element : Remove oil, condensed water and particles >5 $\mu$ / Metal Bowl. 2. 0.01 $\mu$ filter element : Remove 99.99% particles and oil >0.01 $\mu$ / Metal Bowl. 3. Desiccant dryer desiccant beads change color from blue to pink when they need to be changed or reactivated / Metal Bowl.	250 PSI	225 PSI	18

MODEL	NPT	DESCRIPTION	MAX INPUT	MAX OUTPUT	CFM
ESFFLMR966N	3/4"	1. 5 $\mu$ filter element : Remove oil, condensed water and particles >5 $\mu$ / Metal Bowl. 2. 0.01 $\mu$ filter element : Remove 99.99% particles and oil >0.01 $\mu$ / Metal Bowl. 3. Desiccant dryer desiccant beads change color from blue to pink when they need to be changed or reactivated / Metal Bowl. 4. Regulator w/ Gauge 7 - 215 PSI Range.	250 PSI	215 PSI	16

MODEL	NPT	DESCRIPTION	MAX INPUT	MAX OUTPUT	CFM
ESF966N	3/4"	5 $\mu$ filter element : Removes oil, condensed water, and particles >5 $\mu$ / Metal Bowl / Water Separator.	250 PSI	225 PSI	162
ESF966NA	3/4"	5 $\mu$ filter element : Removes oil, condensed water, and particles >5 $\mu$ / Metal Bowl / Water Separator / auto drain valve.	250 PSI	225 PSI	162
ESF968NA	1"	5 $\mu$ filter element : Removes oil, condensed water, and particles >5 $\mu$ / Metal Bowl / Water Separator / auto drain valve.	250 PSI	225 PSI	183

# ACTIVATED CHARCOAL FILTERS



**ESFA968N**

MODEL	NPT	DESCRIPTION	MAX INPUT	MAX OUTPUT	CFM
ESFA968N	1"	Activated charcoal filter element : Absorbs oil vapors and harmful gases / Metal Bowl.	250 PSI	225 PSI	183

# AUTOMATIC DRAIN



**ESD704NA**

MODEL	NPT	DESCRIPTION	MAX INPUT
ESD704NA	1/2"	<ol style="list-style-type: none"> <li>1. High inlet pressure support</li> <li>2. Longer life time</li> <li>3. Auto drain design</li> <li>4. Application for any end of pipe system</li> </ol>	175 PSI

# ACCESSORIES

## ▶ Brass Fitting: Reducer



MODEL	DESCRIPTION
JR03M02F	Male 3/8"NPT to Female 1/4"NPT
JR04M02F	Male 1/2"NPT to Female 1/4"NPT
JR04M03F	Male 1/2"NPT to Female 3/8"NPT
JR06M04F	Male 3/4"NPT to Female 1/2"NPT

## ▶ Manifold Block



MB-L2

MB-T3

MODEL	DESCRIPTION
MB-L2	2 way Manifold Block
MB-T3	3 way Manifold Block
MB-X5	5 way Manifold Block
MB-R3	3 way Manifold Block Round
JA092N	3 way Manifold Block Brass



MB-X5



MB-R3



JA092N

## ▶ Swivel Fitting



V-202N

HR-44

MODEL	DESCRIPTION
V-202N	Male NPT 1/4", Female NPT 1/4"
HR-33	Male NPT 3/8", Female NPT 3/8"
HR-44	Male NPT 1/2", Female NPT 1/2"

## ▶ Brass Fitting



MODEL	DESCRIPTION
NPL-02H	Nipple Male NPT 1/4" Both Ends
NPL-03H	Nipple Male NPT 3/8" Both Ends
NPL-04H	Nipple Male NPT 1/2" Both Ends
NPL-06H	Nipple Male NPT 3/4" Both Ends



# VALVE & MINI REGULATORS

## ▷ Safety Valve



SV-120

MODEL	DESCRIPTION
SV-120	1/4"NPT 120PSI 47 SCFM
SV-125	1/4"NPT 125PSI 49 SCFM
SV-150	1/4"NPT 150PSI 58 SCFM
SV-165	1/4"NPT 165PSI 64 SCFM
SV-170	1/4"NPT 170PSI 65 SCFM
SV-200	1/4"NPT 200PSI 76 SCFM

## ▷ Check Valve



CV-06FMJ



CV-06FMR



CV-04MMR



CV-04FMR



CV-04

MODEL	DESCRIPTION
CV-06FMJ	Male NPT 3/4", Female NPT 3/4"
CV-06FMR	Male NPT 3/4", Female NPT 3/4"
CV-04FMR	Male NPT 1/2", Female NPT 1/2"
CV-04MMR	Male NPT 1/2", Male NPT 1/2"
CV-04	Male NPT 1/2", Check Valve (Jumping), Check Valve (Flare)

## ▷ Ball Valve



BV-02MF



BV-02MM



BV-02FF



BV-04

MODEL	DESCRIPTION
BV-02MF	Male NPT 1/4", Female NPT 1/4"
BV-02MM	Male NPT 1/4", Male NPT 1/4"
BV-02FF	Female NPT 1/4", Female NPT 1/4"
BV-04	Male NPT 1/2", Female NPT 1/2"
BV-06	Male NPT 3/4", Female NPT 3/4"



**MR-CT1**



**BV-02H**



**BV-02K**



**DV-02**



**DV-02W**

MODEL	DESCRIPTION
MR-CT1	Combination Valve
BV-02H	Mini Ball Valve Male NPT 1/4", Female NPT 1/4"
BV-02K	Drain Valve Male NPT 1/4"
DV-02	Drain Valve 1/4" THUMBSCREW
DV-02W	Drain Valve 1/4" WINGNUT

► **Mini Regulator**



**RV-02A**



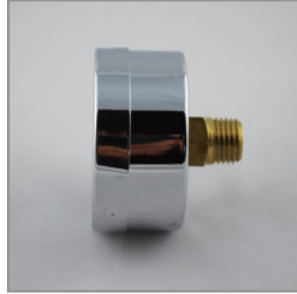
**RV-02B**



**RV-02C**

MODEL	DESCRIPTION
RV-02A	Mini Regulator , 1/4" NPT R -> L
RV-02B	Mini Regulator , 1/4" NPT L -> R
RV-02C	Mini Regulator , 1/4" NPT 4 Port

## PRESSURE GAUGES



MODEL	Dial	BACK MNT NPT	PSI
PG15A-01B160	1.5"	1/8"	0 - 160
PG15A-02B200	1.5"	1/4"	0 - 200
PG20A-01B200	2"	1/8"	0 - 200
PG20A-02B160	2"	1/4"	0 - 160
PG20A-02B200	2"	1/4"	0 - 200
PG20A-02B300	2"	1/4"	0 - 300
PG25A-02B200	2.5"	1/4"	0 - 200
PG25A-02B300	2.5"	1/4"	0 - 300



MODEL	Dial	LOWER MNT NPT	PSI
PG20A-02S200	2"	1/4"	0 - 200
PG20A-02S300	2"	1/4"	0 - 300
PG25A-02S300	2.5"	1/4"	0 - 300

## LIGUID FILLED PRESSURE GAUGES



MODEL	Dial	BACK MNT NPT	PSI
PG25L-02B200	2.5"	1/4"	0 - 200
PG25L-02B300	2.5"	1/4"	0 - 300
PG40L-02B200	4"	1/4"	0 - 200
PG40L-02B300	4"	1/4"	0 - 300



MODEL	Dial	LOWER MNT NPT	PSI
PG25L-02S200	2.5"	1/4"	0 - 200
PG25L-02S300	2.5"	1/4"	0 - 300

# QUICK COUPLERS

## ▶ Industrial Interchange Series



MODEL	BODY SIZE	DESCRIPTION
M2-20SM	1/4"	1/4" Male socket, steel
M2-30SM	1/4"	3/8" Male socket, steel
M3-20SM	3/8"	1/4" Male socket, steel
M3-30SM	3/8"	3/8" Male socket, steel
M4-40SM	1/2"	1/2" Male coupler, steel



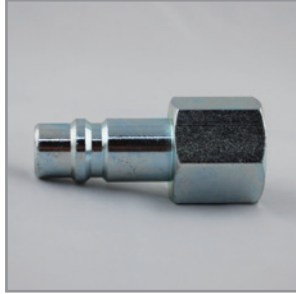
MODEL	BODY SIZE	DESCRIPTION
M2-20SF	1/4"	1/4" Female socket, steel
M2-30SF	1/4"	3/8" Female socket, steel
M3-20SF	3/8"	1/4" Female socket, steel
M3-30SF	3/8"	3/8" Female socket, steel
M4-40SF	1/2"	1/2" Female coupler, steel



MODEL	BODY SIZE	DESCRIPTION
M2-20SH	1/4"	1/4" coupler w/barb, steel
M4-40SH	1/2"	1/2" coupler w/barb, steel



MODEL	BODY SIZE	DESCRIPTION
M2-20PM	1/4"	1/4" Male plug, steel
M2-30PM	1/4"	3/8" Male plug, steel
M3-20PM	3/8"	1/4" Male plug, steel
M3-30PM	3/8"	3/8" Male plug, steel
M4-40PM	1/2"	1/2" Male plug, steel



MODEL	BODY SIZE	DESCRIPTION
M2-20PF	1/4"	1/4" Female plug, steel
M2-30PF	1/4"	3/8" Female plug, steel
M3-20PF	3/8"	1/4" Female plug, steel
M3-30PF	3/8"	3/8" Female plug, steel
M4-40PF	1/2"	1/2" Female plug, steel



MODEL	BODY SIZE	DESCRIPTION
M2-20PH	1/4"	1/4" plug w/barb, steel
M4-40PH	1/2"	1/2" plug w/barb, steel



▷ **Universal Series - Automatic 3 in 1**



MODEL	BODY SIZE	DESCRIPTION
U2-20SM	1/4"	1/4" Male socket, steel
U2-30SM	1/4"	3/8" Male socket, steel
U3-20SM	3/8"	1/4" Male socket, steel
U3-30SM	3/8"	3/8" Male socket, steel



MODEL	BODY SIZE	DESCRIPTION
U2-20SF	1/4"	1/4" Female socket, steel
U2-30SF	1/4"	3/8" Female socket, steel
U3-20SF	3/8"	1/4" Female socket, steel
U3-30SF	3/8"	3/8" Female socket, steel



MODEL	BODY SIZE	DESCRIPTION
U2-20PM	1/4"	1/4" Male plug, steel
U3-20PM	3/8"	1/4" Male plug, steel
U3-30PM	3/8"	3/8" Male plug, steel



MODEL	BODY SIZE	DESCRIPTION
U2-20PF	1/4"	1/4" Female plug, steel
U3-20PF	3/8"	1/4" Female plug, steel
U3-30PF	3/8"	3/8" Female plug, steel





## WELCOME

EnAirsytem Products provides compressed air filtration and regulator parts, pressure switches, magnetic starters, compressor motors and other electrical components to meet your air treatment needs.

## ABOUT ENAIRSYSTEM

We specialize in high CFM micro, activated charcoal and desiccant filters, oil filters, lubricators and fittings for all your industrial and manufacturing air handling needs. These components are engineered to meet the highest industry standards to provide quality and value for your repair or manufacturing needs.

